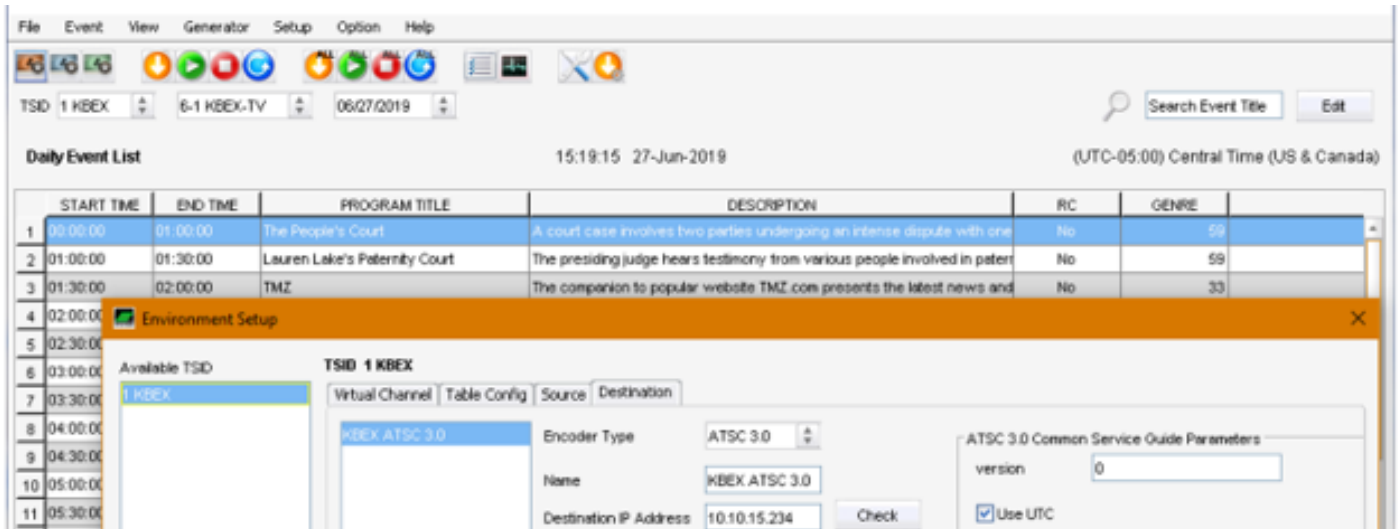




MetaWright 3

ATSC 3.0 Signaling/Service Announcement & Broadcast Gateway



A CENTRALIZED ATSC 1.0/3.0 SOLUTION

MetaWright 3 is a centralized signaling and service announcement generator providing broadcasters with the ability to generate and manage both ATSC 1.0 PSIP and ATSC 3.0 metadata. It meets all FCC requirements, and supports ATSC Recommended Practices.

MetaWright 3 enables either a single station or multiple stations to have different service streams directed through multiple IP outputs. It supports ROUTE and SLT/SLS low layer signaling IP output for direct connection to Schedulers, Broadcast Gateways, and equipped Modulators.

It is available with an integrated Broadcast Gateway, simplifying the ATSC 3.0 architecture to just a DASH encoder/packager, **MetaWright 3**, and an ATSC 3.0 enabled exciter.

It can also supply NRT file delivery for flexible extensions such as application delivery and Advanced Emergency Alerts.

Applications

- ATSC 3.0 Lighthouse
- ATSC 1.0 to ATSC 3.0 flash cut
- ATSC 1.0 & ATSC 3.0 simulcast
- Single or Multiple Stations

Key Features

- ATSC A/330, A/331, & A/332
- ROUTE media encapsulation
- ROUTE encapsulation of ESG & NRT
- SLT, SLS, & LMT creation
- RRT and AEAT table creation
- Link-layer overhead reduction
- ATSC 1.0 PSIP & ATSC 3.0 Metadata
- Interfaces for most encoders/multiplexers

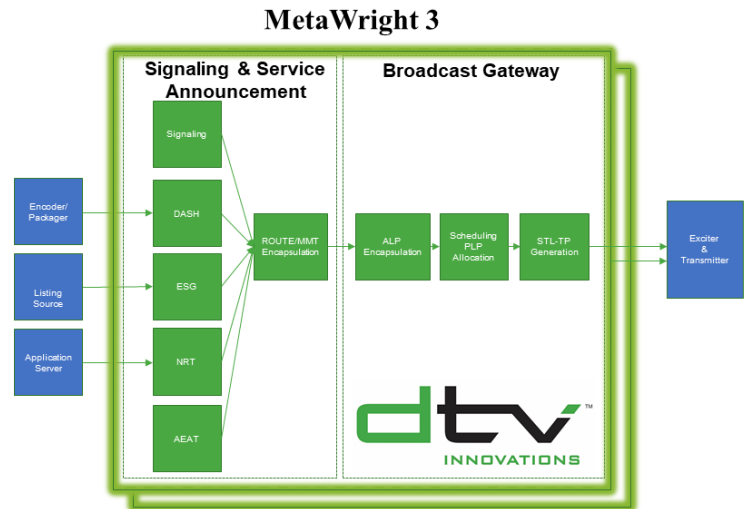
VISION + INNOVATION



MetaWright 3

ATSC 3.0 Signaling/Service Announcement & Broadcast Gateway

MetaWright 3 provides an easy-to-use GUI for creating services and allocating bandwidth to those services. The Broadcast Gateway supports multiple subframe, multiple PLPs, and Layer Division Multiplexing providing the maximum service flexibility to accommodate varying requirements. **MetaWright 3** is a full-featured ATSC 1.0/ATSC 3.0 metadata processing solution which minimizes user time in setup and administration.



Signaling & Service Announcement Features	EPG Management	
A/331 – Signaling for service discovery; delivery specifying transport protocols; synchronization of media components across different networks, protection via AL-FEC	Manual event editing & scheduled ESG importing from traffic or listing services including Gracenote, TitanTV, & Myers ProTrack	
ROUTE encapsulation of DASH segments, ESG, and NRT	Multiple source ingest with merge	
Defining multiple service streams to support multiple stations, redundant paths, and hybrid broadcast/broadband feeds	A/332 ATSC 3.0 OMA BCAST and A/76 ATSC 1.0 Program Metadata Communications Protocol (PMCP) import/export of EPG data	
Supports terrestrial and cable applications	Event overrun/gap management, recurring and default background event	
Broadcast Gateway Features	Service Information	
Generates Bootstrap, Preamble and multiple Subframes	Unlimited licensable virtual channels & services	
Supports all modulation, code rate, interleaver, and forward error correction combinations	Closed-caption, audio, content advisory, and genre descriptors	
Generates multiple PLPs	Advanced Emergency Alert Table support	
Supports Layer Division Multiplexing	User defined ESG time span and refresh cycles	
Allocates bandwidth to defined services		
Generates ALPTP or STLTP w/ optional SMPTE 2022 FEC		
I/O	MetaWright 3 Options	
Inputs: DASH packaged media, External Applications, and Listing information Outputs: ROUTE IP, ALPTP, STLTP	MTW3-BASE	ATSC 3.0 Signaling & Service - 3 VC
	MTW3-VC UPG	Add 3 virtual channels
	MTW3-ROUTE-INT	ROUTE encoder software interface
	MTW3-SCH/GTWAY	ATSC 3.0 broadcast gateway
	MTW3-Inst&Comm	Installation, integration, & commissioning
	MTW3-SVC1	Annual Support Contract – 1 year

VISION + INNOVATION